



Using the BARBIERI Spectrophotometers

Spectro Swing and Spectro LFP

with ProfileMaker (GretagMacbeth/ X-Rite)

August 4, 2009

Table of Contents

INTRODUCTION	1
USING BARBIERI TARGETS	2
PROFILEMAKER TARGETS/ CUSTOMIZED TARGETS	3

Introduction

This document describes how to use the GretagMacbeth / X-Rite ProfileMaker software for printer profile creation.

The description applies to both versions 4 and 5 of the software.

Measurements are made with the measuring software Barbieri Profile-Xpert Gateway and the resulting measurement file is then loaded into ProfileMaker.

The Profile-Xpert Gateway software is supplied with your measuring instrument or available for free download from the following web site: www.profile-xpert.com

Using BARBIERI Targets

The following targets are recommended to be used:

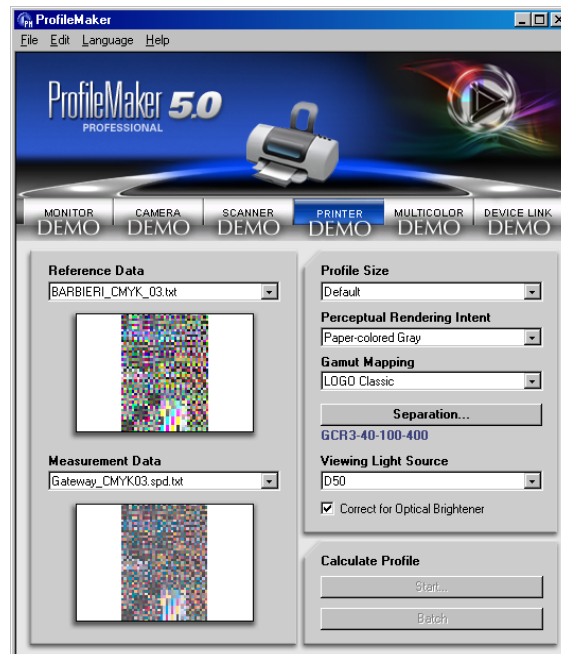
CMYK_03	corresponds to the ECI2002 Random Layout target
CMYK_04	corresponds to the ECI2002 Visual Layout target
CMYK_05	corresponds to the ANSI IT8.7/4 target
CMYK_02	2-page CMYK target for use with low resolution printers
CMYK_08	corresponds to the ECI2002 Random Layout target on 3 pages. (9 x 9 mm patch size)
RGB_03	for RGB profiling (1248 patches)
RGB_02	2-page RGB target for use with low resolution printers

Use the job files supplied with the Gateway software. Data is saved in “BARBIERI” format.

The BARBIERI reference files for these targets are used for profile creation. These reference files can be found in the “References” folder of the Gateway application.

Proceed as follows:

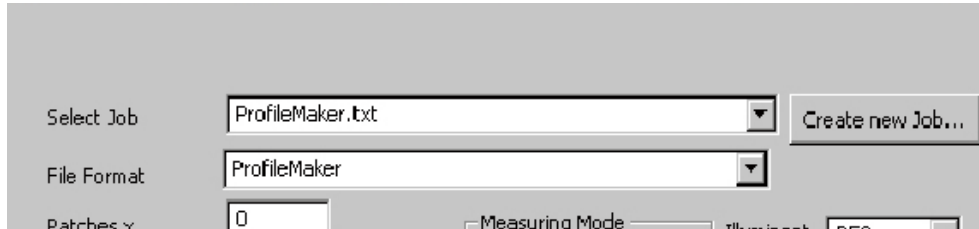
- Run ProfileMaker and select the “Printer” profiling section.
- Under “Reference Data” select “Open”
- Under “Files of Type” choose “All Files (*.*)”
- Choose the reference file (*.ref) for your target from the “References” folder in the Gateway program directory.
- Under “Measurement Data” select “Open...”
- Choose the “*.spd.txt” file created by the Gateway measuring software.



ProfileMaker Targets/ Customized Targets

The Profile-Xpert Gateway software supports in its Advanced Mode the measurement of customized targets created with MeasureTool or supplied with ProfileMaker.

As the data sequence of the reference files of MeasureTool are in columns format, you need to make sure to define a job in the Gateway software using the “ProfileMaker” data file format.



The original GretagMacbeth / X-Rite targets are supplied/ created without the autopoising markers needed by the Barbieri Spectro Swing and LFP to recognize the target.

Use the manual positioning option of the Barbieri measuring software to measure these targets, or add the autopoising lines to the target to make use of the autopoising facility. Please ask Barbieri for the specifications of the creation of these lines which are included with the SDK.

Notes:

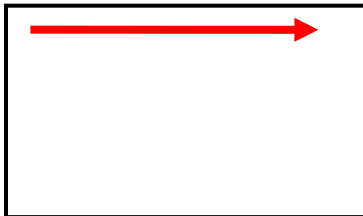
File Formats:

ProfileMaker can read both the BARBIERI and the ProfileMaker file formats.

The BARBIERI file format does save data in text format in row sequence. The

PROFILEMAKER format saves data in columns.

BARBIERI electronic



ProfileMaker



When modifying the original Jobs from "BARBIERI" file format to "ProfileMaker" file format, you can use the reference file supplied with ProfileMaker:
(example: for the CMYK_03 target use "ECI2002R CMYK.txt")

Data representation in ProfileMaker:

The parameter LGOROWLENGTH in the measuring file does indicate the length of the columns. If your target on the screen does not look as it is printed, change this parameter in the reference/ measuring file.